

MM

Marion Mercier - Model Agent

OPHELIE

HIM



Height 179

Bust 85

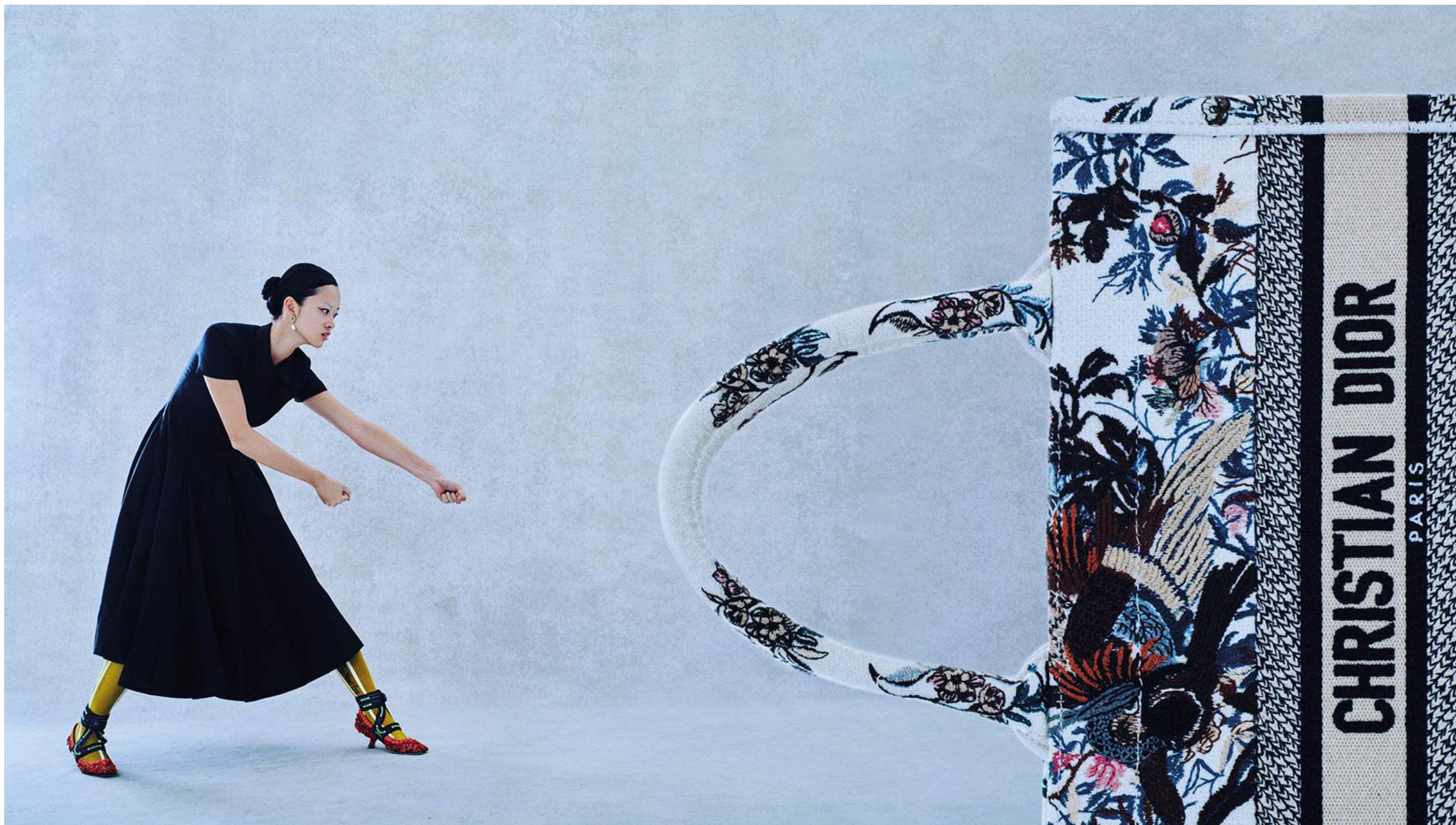
Waist 63

Hips 92

Shoes 40

Marion Mercier Agent





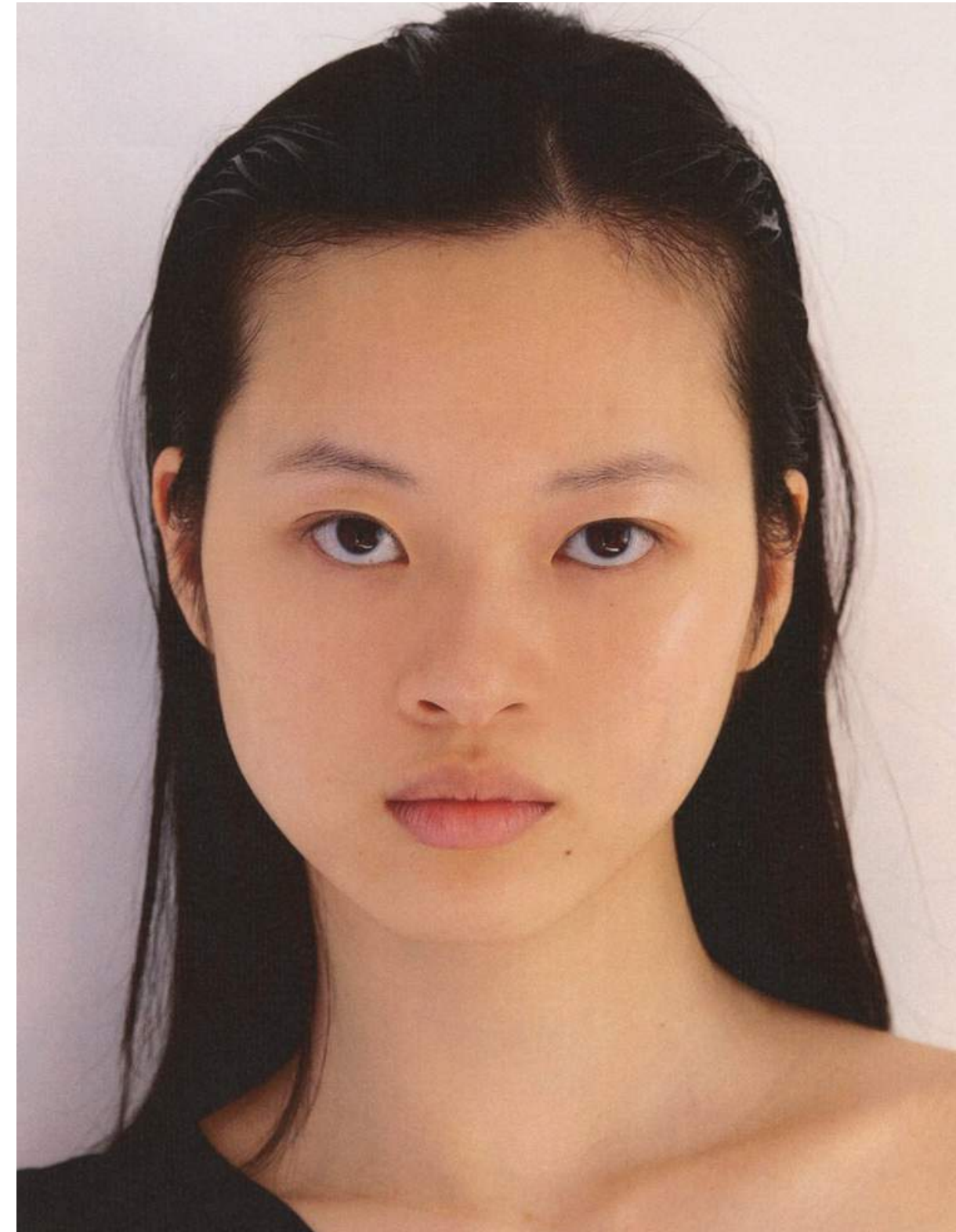


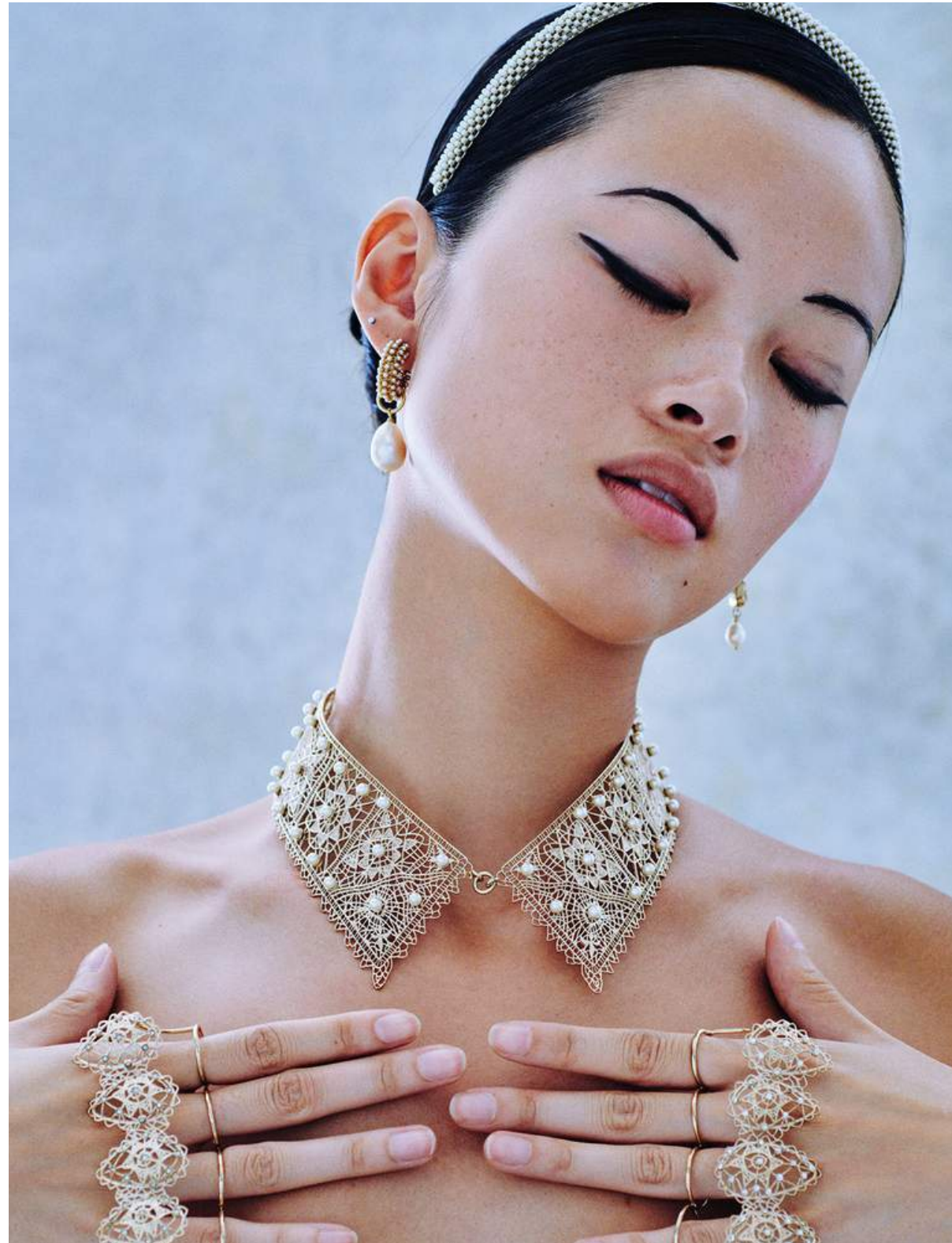
EXQUISES
Ensemble de bagues Be Mine,
Be Mine Lotus et Be Mine Star,
en or blanc et diamants,
Ginette NY Bridal, bague True,
en platine et diamant,
Tiffany & Co., bague
Le Cube Diamant, en or blanc
et diamant, Dinh Van,
Ensemble en satin, Fendi.

PHOTO: JASON MERRITT



EXPRESSIFS
Bracelets City HardWear et T1,
en or blanc et diamants,
et collier City HardWear,
en argent, Tiffany & Co.,
Veste brodée, Isabel Marant,
brassière et culotte en dentelle
et soie, Dolce & Gabbana.

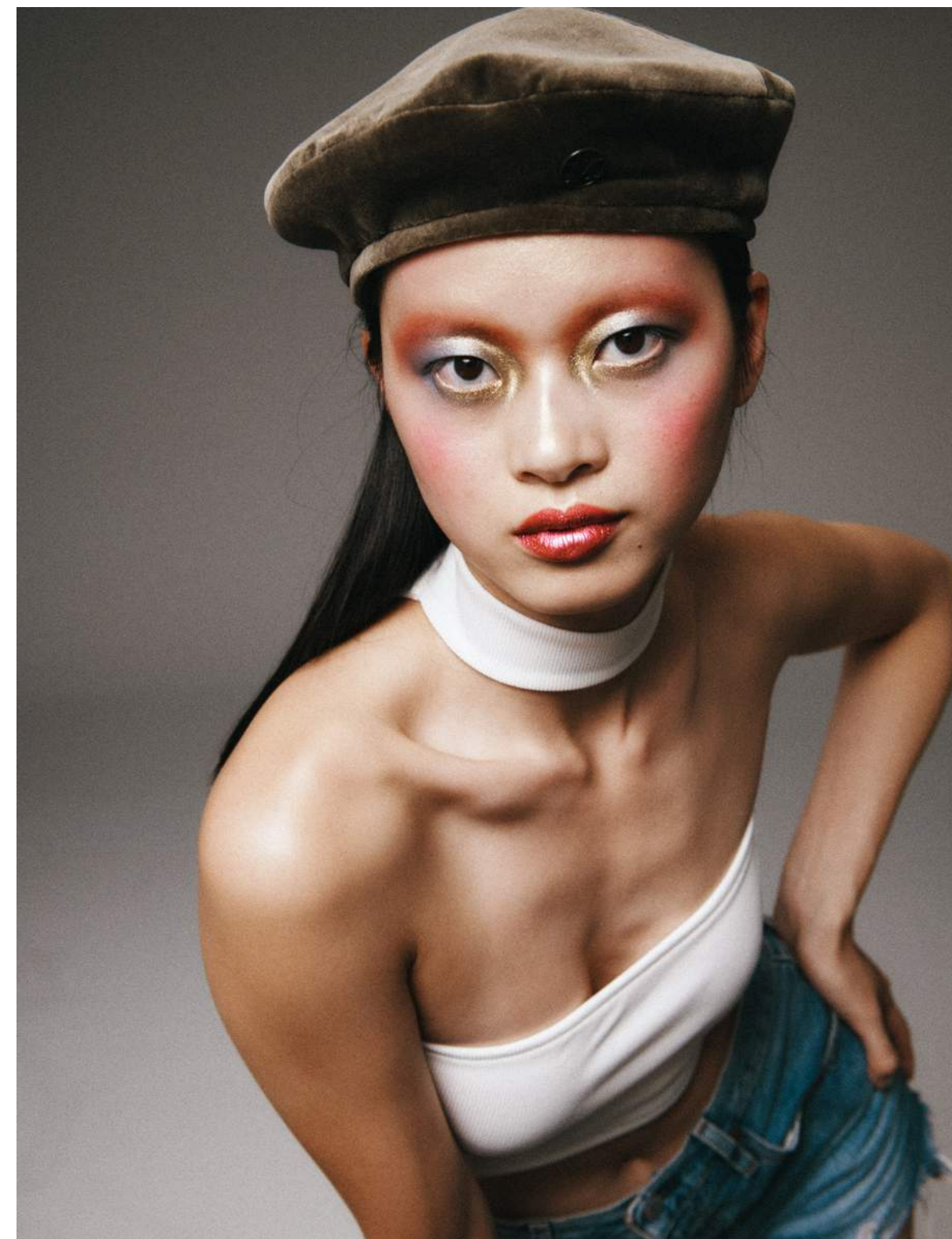






skin, shimmering
organza bra top; metal
glass and strass earring;
metal and strass belt;
lambskin bag
OPPOSITE: Fantasy tweed
jacket; embroidered
organza bra top; washed
denim jeans; metal and
strass belt; braided
thread bag
All clothes and accessories
worn throughout the
shoot are from Chanel's
cruise 2021 collection







本图 / 路易威登 BRAVERY 高级珠宝系列 LA PASSION 手链, 镶嵌红宝石与钻石
对图 / 路易威登 BRAVERY 高级珠宝系列 L'ÉLAN VITAL 项链, 镶嵌钻石与 6 颗 LV MONOGRAM 造型切割钻石
对图珠宝 / 路易威登 BRAVERY 高级珠宝系列 THE ARROW 项链; 对图珠宝 / 路易威登 BRAVERY 高级珠宝系列 LA STAR DU NORD 项链





Marion Mercier Agent

A close-up portrait of a woman's face, looking slightly to the right. She has dark hair and is wearing a large, ornate earring with a blue and white pattern. Overlaid on her face is a large, stylized, gold-colored 'MM' logo. The logo consists of three vertical bars forming the 'M', with a horizontal bar at the top and bottom. The background is a soft, out-of-focus light color.

MM

Marion Mercier - Model Agent

☎ + 33 6 17 25 24 98

<http://www.marionmercier.com>
scoutingmarionmercier@gmail.com